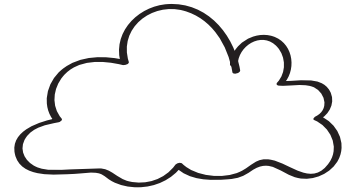


LIGHTNING



SAFETY

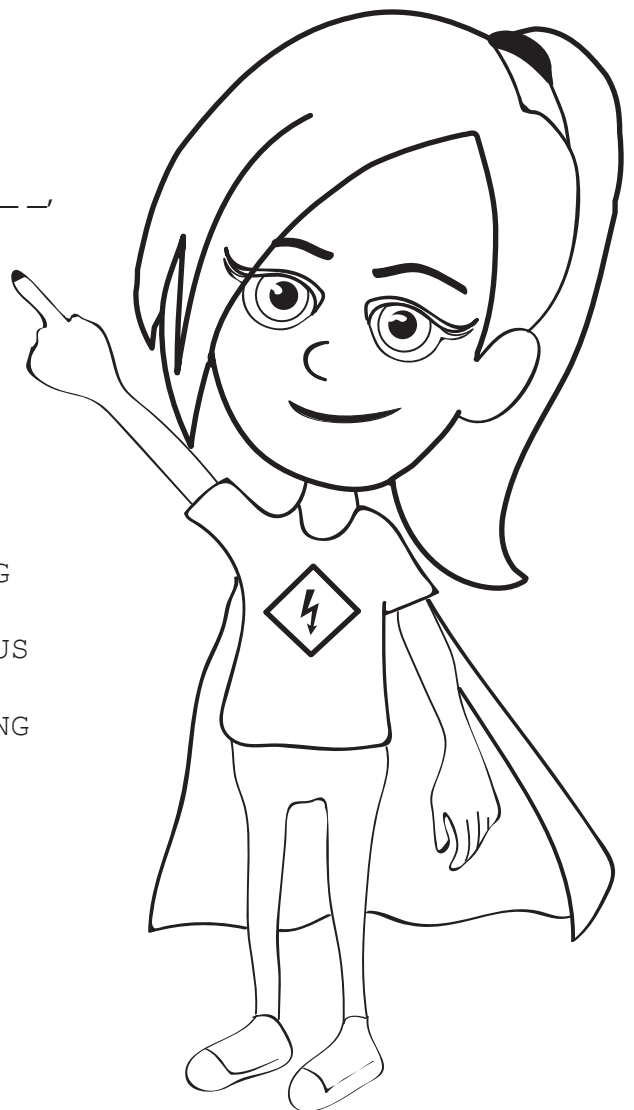
with

Safety Sadie

Did you know _____ can _____ from up to 15 miles away? It is _____ to be outside during a _____. A good rule to remember is "When _____ roars go _____." Go inside a house or a _____ or a hard top _____. Never seek shelter under a _____ or pavilion. Wait at least 30 _____ after the last roar of thunder to head _____.

S E T U N I M T C E B X Y I I
 Z K I I P M I H E A D X O N K
 G I U K N A F U G D R Y D Q Z
 S R L H S Q S N S Z I O S I V
 C T Y Z Y R I D S N O S G K Z
 S S B W E N Z E R R Q B T J O
 Q Q G U T N G R S P J G U U X
 T M K H I K P W L X M M P P O
 L W G M Y L Z X Y H R T R E E
 C I M R V E D G J O C T P J C
 L Y W G P K Y I T Z W J X V O
 Z D C V W P Q S N S Y G Z U P
 D A N G E R O U S G Z G C V K
 A D Z G N L P Z F F G I G A G
 M S C W H P T I U J W Z Z P Y

BUILDING
 CAR
 DANGEROUS
 INDOORS
 LIGHTNING
 MINUTES
 OUTSIDE
 STORM
 STRIKE
 THUNDER
 TREE



For more information, visit:



Answer key:

Did you know lightning can strike from up to 15 miles away? It is dangerous to be outside during a storm. A good rule to remember is "When thunder roars go indoors." Go inside a house or a building, or a hard top car. Never seek shelter under a tree or pavilion. Wait at least 30 minutes after the last roar of thunder to head outside.

